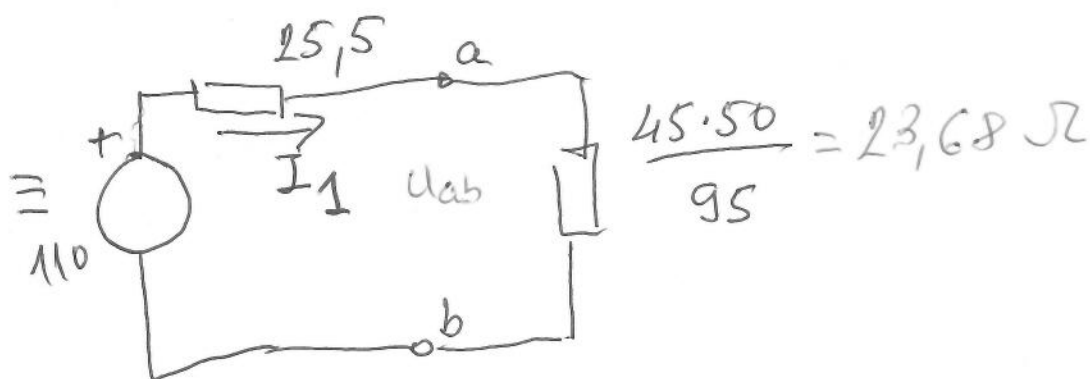
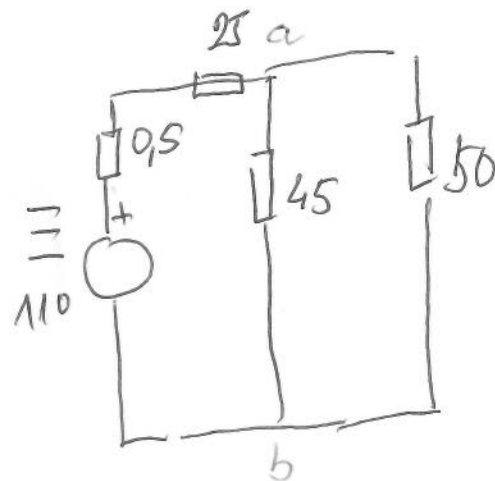
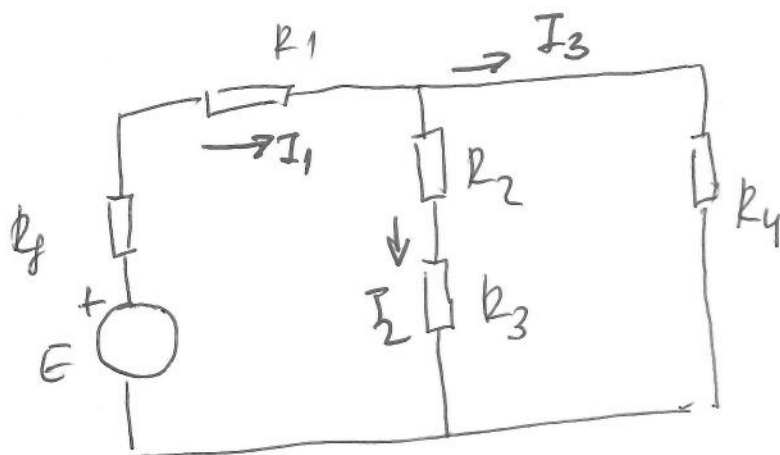


Zadatak : Izračunati struje  $I_1, I_2, I_3$

Brojni podaci  $E = 110 \text{ V}, R_g = 0,5 \Omega, R_1 = 25 \Omega$

$R_2 = 10 \Omega, R_3 = 35 \Omega, R_4 = 50 \Omega$



$$I_1 = \frac{110}{25 + 23,68} = \frac{110}{48,68} = 2,23 \text{ A}$$

$$U_{ab} = 52,96 \text{ V}$$

$$U_{ab} = (R_2 + R_3) I_2 \quad ; \quad U_{ab} = R_4 I_3$$

$$I_2 = 1,18 \text{ A}$$

$$I_3 = 1,05 \text{ A}$$

PROVERA I. k. z.