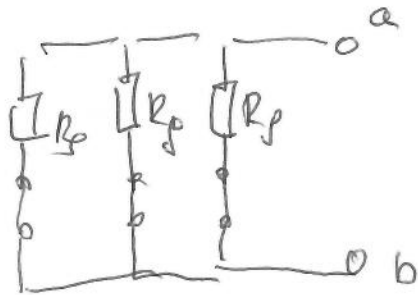
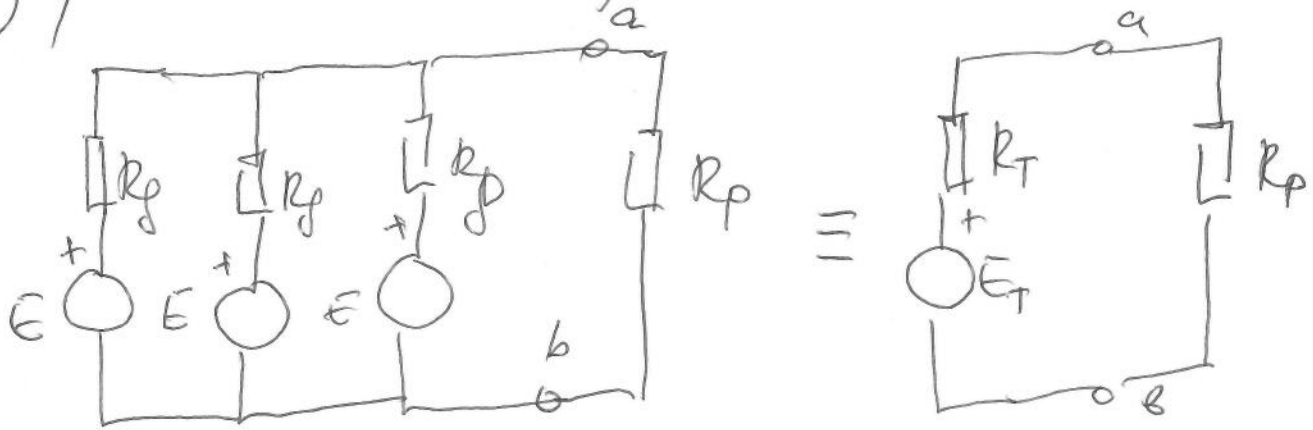
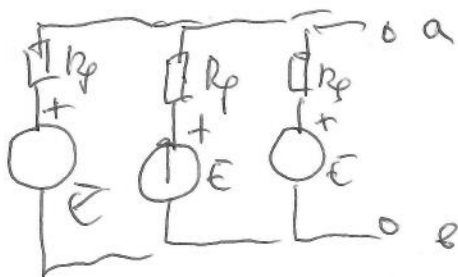


Primer :

① paralelno vezani generatori iste EMS i R_g 

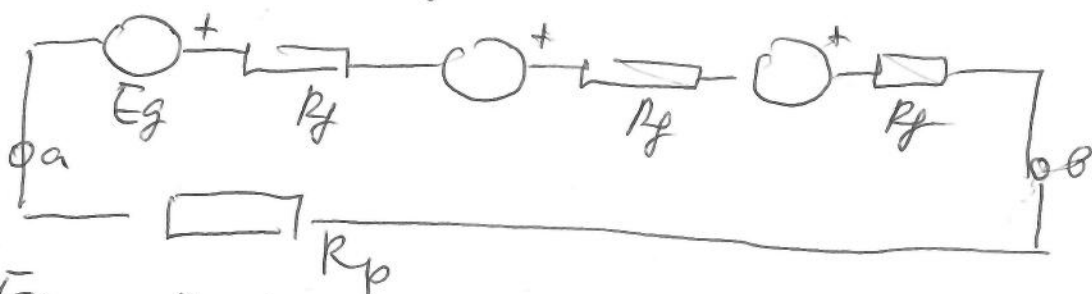
$$\frac{1}{R_T} = \frac{1}{R_g} + \frac{1}{R_g} + \frac{1}{R_g} = \frac{3}{R_g}$$

$$R_T = \frac{R_g}{3}$$

 E_T 

$$E_T = E$$

② Redno vezani generatori



$$E_T = 3 E_g \quad R_T = 3 R_g$$